

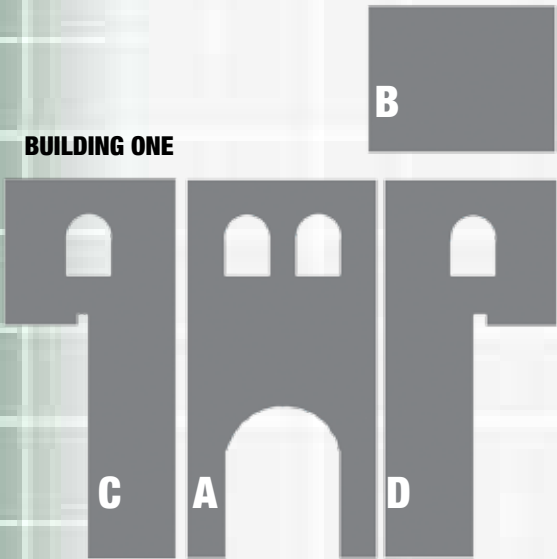
HOW TO BUILD...

By Paul Davies 

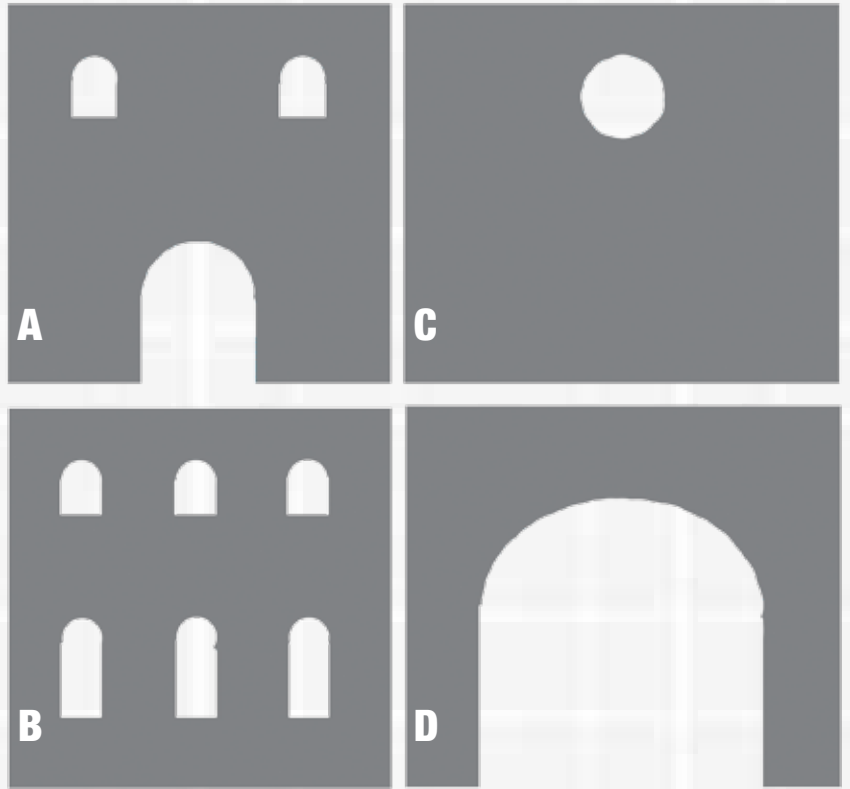
A SPANISH CONVENT

PLANS FOR THE CONVENT

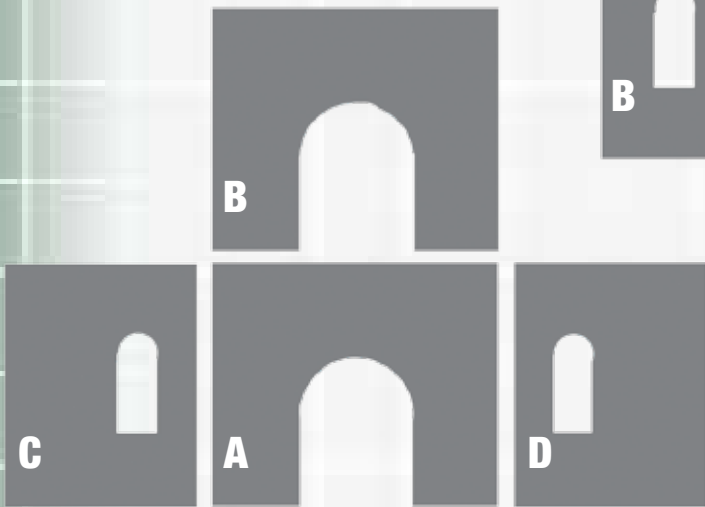
BUILDING ONE



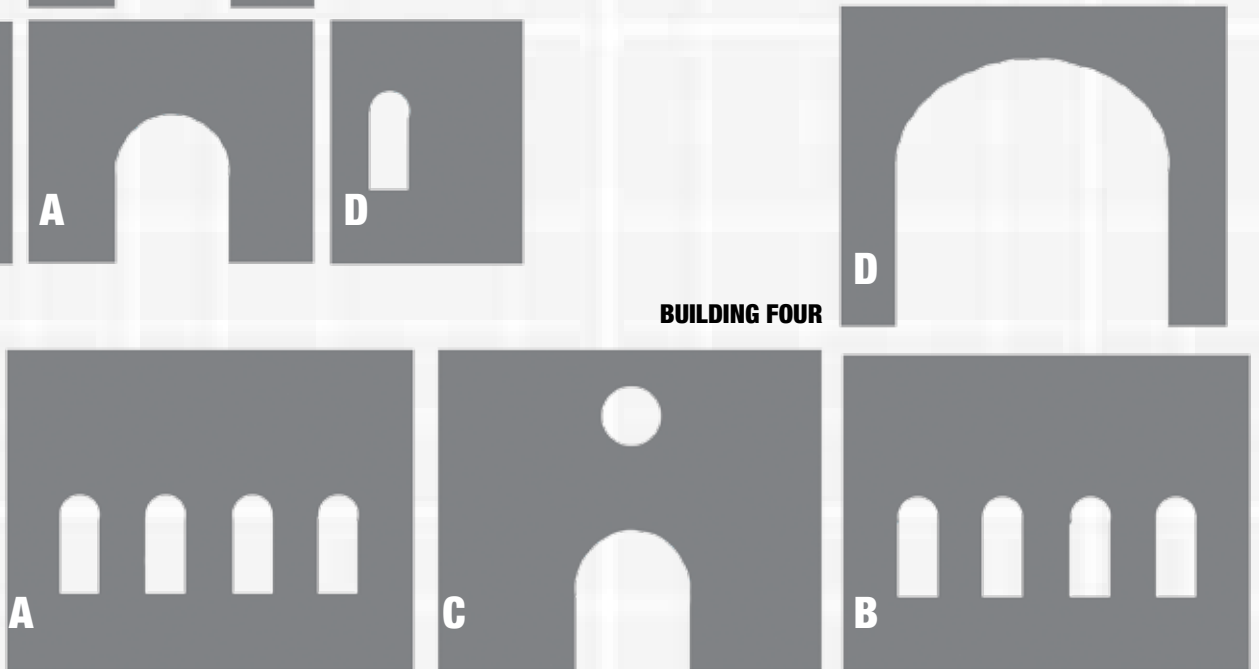
BUILDING THREE



BUILDING TWO



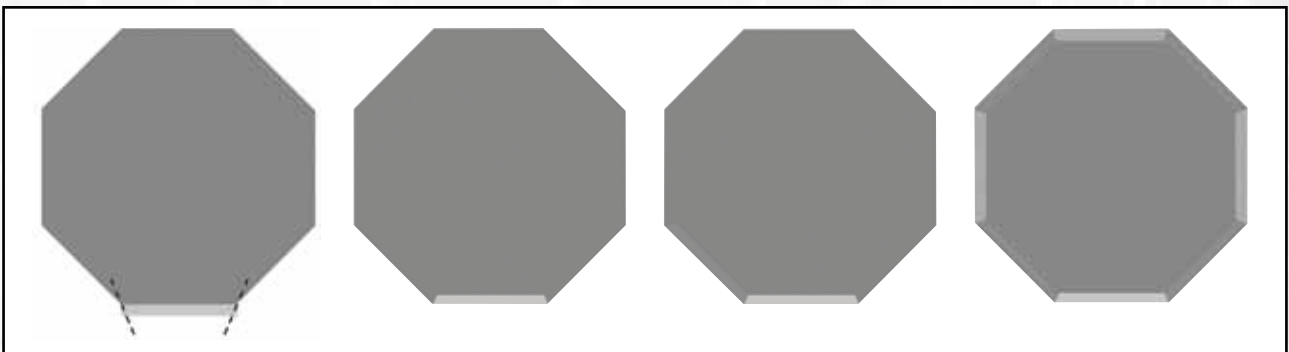
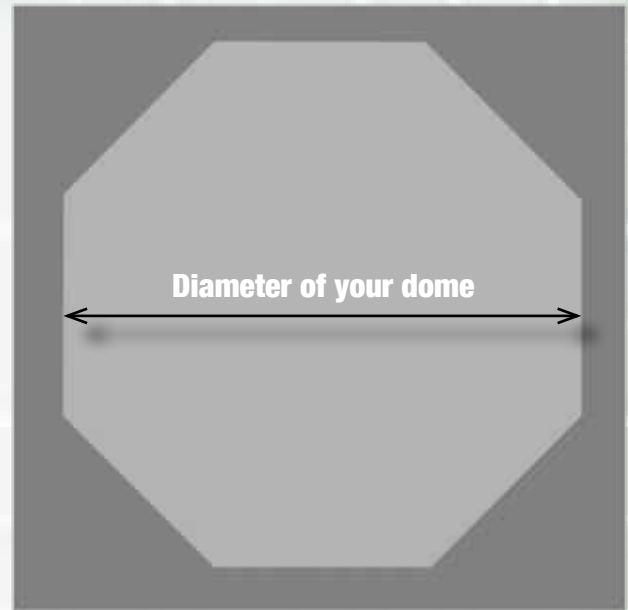
BUILDING FOUR



THE PLINTH, CUPOLA, AND DOME

A & B (cut 2)

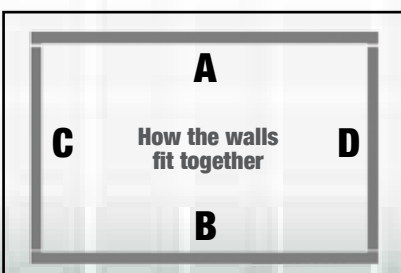
C & D (cut 2)



EARTHEN RAMPARTS WITHIN THE CONVENT



SAMPLE "END" TEMPLATE



The building plans can be photocopied and enlarged (or reduced) to suit the needs of your preferred gaming scale, be it 6mm or 54mm. As you can see from the photographs in the magazine article, the 28mm miniature Mexican defenders can line up the top of their shakos to the bottom of the arched windows on Building Four.

You will also notice we haven't provided templates for the convent roofs. This is because the thickness of the foambard you use may vary from ours, which would then impact the interior dimensions. Simply measure these dimensions once you have assembled each of the four buildings, cut out the roofs, and drop them in.